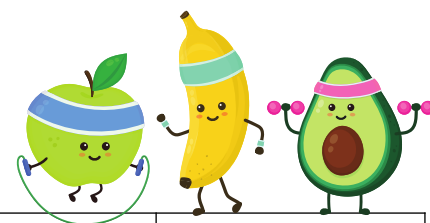


PRESCHOOL SNACK MENU



Monday	Tuesday	Wednesday	Thursday	Friday	April 2025
	1	2	3	4	
	WG Honey Belly Bears String Cheese	Grapes cut into ¼'s String Cheese	Yellow Pepper Strips WG Heartzels	Applesauce WG Cheez-It's	
7	8	9	10	11	<i>Menu is subject to change based on product availability</i>
Diced Cantaloupe WG Goldfish	Cucumber Slices String Cheese	Diced Banana & Strawberries WG Graham Crackers	Green Pepper Strips WG Scooby Snacks	Diced Kiwi WG Heartzels	
14	15	16	17	18	
Non-Attendance Day	Non-Attendance Day	Non-Attendance Day	Non-Attendance Day	No School	All Grains are "whole grain" 
21	22	23	24	25	
No School	WG Honey Belly Bears String Cheese	Grapes cut into ¼'s String Cheese	Yellow Pepper Strips WG Heartzels	Applesauce WG Cheez-It's	USDA is an equal opportunity provider and employer. Jenny Johns Patterson General Manager Jean Viglione Registered Dietitian Suzanne Robertson Café Services Manager Jess Kremer Executive Chef Phone 814-874-6885
28	29	30			
Diced Cantaloupe WG Goldfish	Cucumber Slices String Cheese	Diced Banana & Strawberries WG Graham Crackers			